

ANSI/BHMA A156.7-2003

American National Standard for Template Hinge Dimensions

This Standard covers the requirements for the length, width, thickness, offset, and screw hole spacing for builders template hinges. Included in the standard are hinge identification symbols and screw sizes. Methods for identifying template hinges that conform to the Standard are provided.

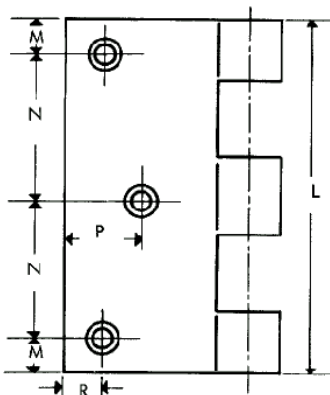
The definitions of the following builders template hinges are stated: full mortise hinge, full surface hinge, half mortise hinge, half surface hinge, slip-in hinge, and swing clear hinge. The template dimensions for each hinge are listed, and illustrations are included.

Sample Requirements:

Please note that these are partial descriptions for illustration purposes only. See Standard for detailed list of symbols, and sizes.

Symbol	Size: A50H	
A (ref)	0.562 inches	14.27 mm
B	2.062 inches	52.37 mm
F	1.250 inches	31.75 mm
K	0.875 inches	22.23 mm
M	0.508 inches	12.90 mm
Thickness	0.146 inches	3.71 mm
Machine Screws Jamb Leaf Flat Head	12-24	

Sample illustration:



Full Mortise Template hinge
3.5 in (88.9 mm) size (A35M)

To purchase a copy of any
ANSI/BHMA Standard log on to
www.buildershardware.com
or call 800.699.9277.

Note: This document is not to be used as a substitute for the standard. Users should refer to the entire standard for complete requirements and details. For further information go to www.buildershardware.com.